

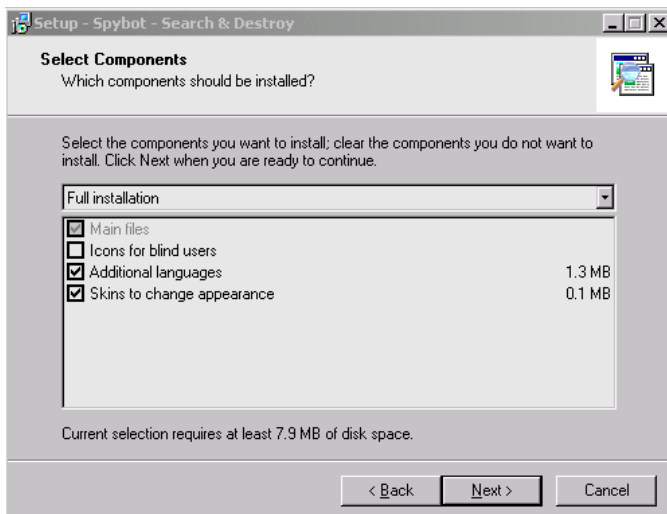
Spybot Installation Instructions

Introduction to the Spybot Installation

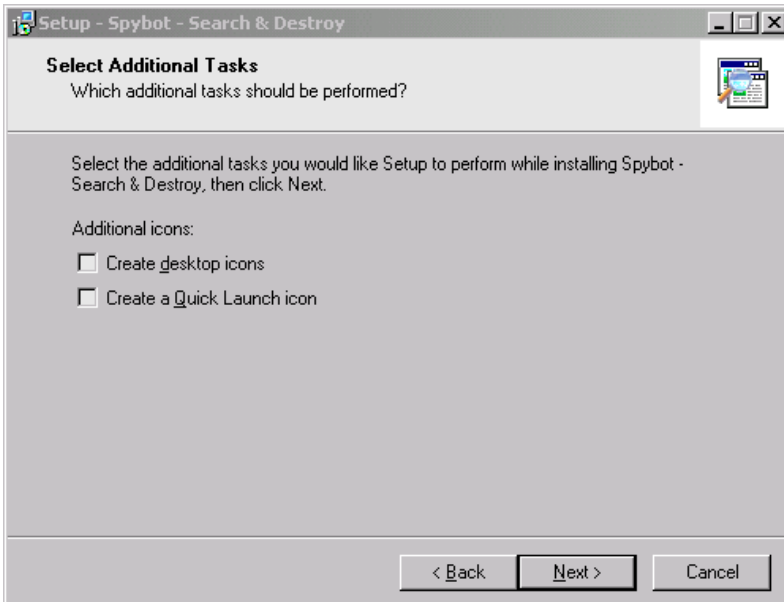
1. Close all applications before installing the software.
2. This process includes the following processes and will take approximately 15 to 25 minutes of uninterrupted time to complete.
 - Installation
 - Configuration
 - Search for new software updates and data files
 - Check for problems
3. **As always, if you need assistance or have questions, contact the IT Services HelpDesk at 737-1482.**

PART I. Install Spybot software

1. Double-click **Campus Software**. Double-click **All Departments**. Double-click **spybot**. Double-click **spybotsd12.exe**.
2. *Welcome to the Spybot – Search & Destroy Setup Wizard* screen displays. Click **NEXT**.
3. *License Agreement* screen appears. Click "**I accept the agreement**". Click **NEXT**.
4. *Select Destination Directory* screen appears. Click **NEXT** to accept the default destination directory.
5. *Select Components* screen appears. Ensure **Full installation** is selected as shown below. Click **NEXT**.



6. *Select Start Menu Folder* screen displays. Click **NEXT** to accept the defaults.
7. *Select Additional Tasks* screen appears. Remove the checkmarks from the selections. Click **NEXT**



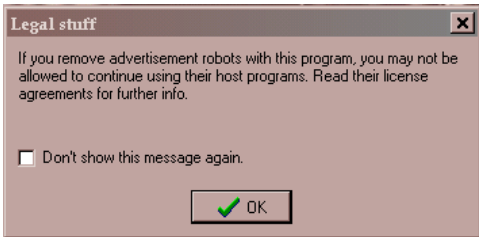
8. *Ready to Install* screen appears. Click **INSTALL**
9. *Completing the Spybot* screen displays. Click **FINISH** to complete the installation

PART II – Configure your Spybot software

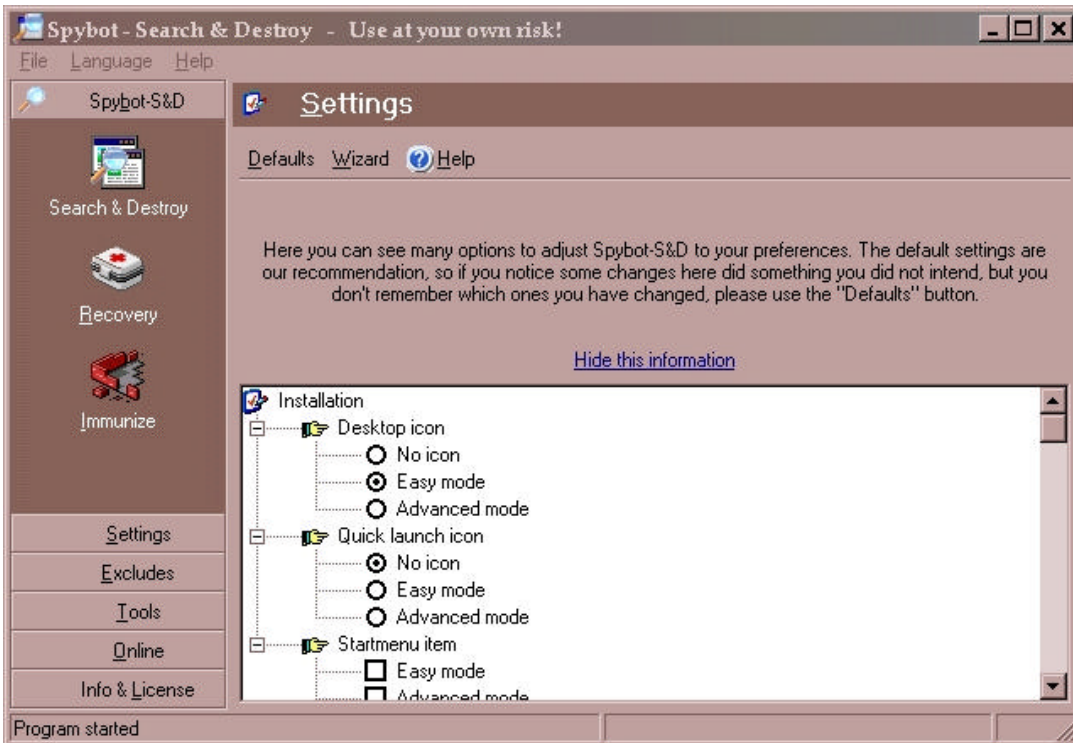
1. Start the SpyBot program. Click **START** | **Programs** | **Spybot Search & Destroy** | **Spybot S & D (Advanced mode)**.
2. The first time you run Spybot, you will see the following screen. Click on the flag labeled **English** to select the English language version of Spybot



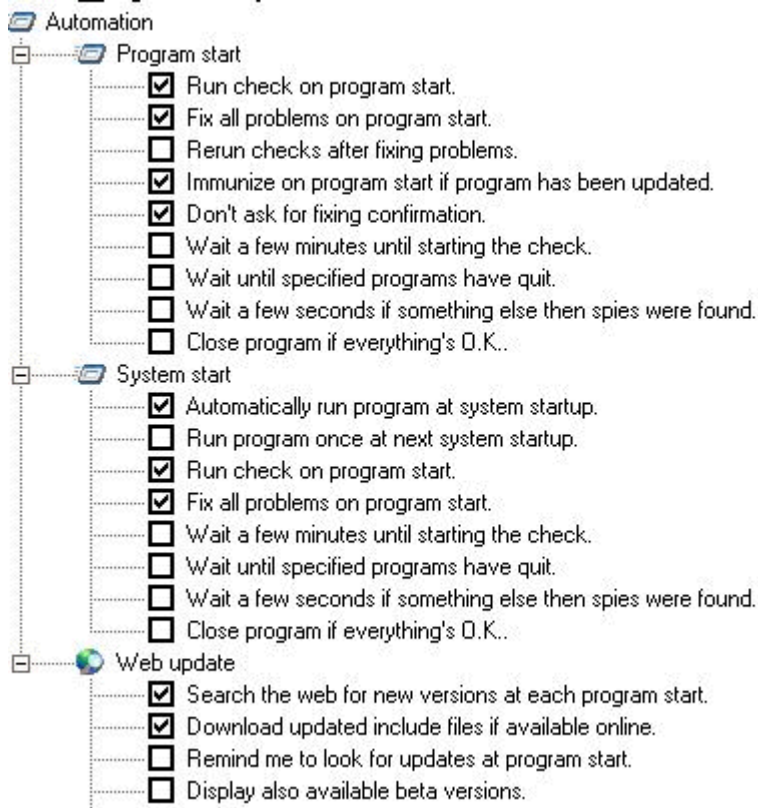
3. You will see the following warning screen. If you do NOT want to see this message again, Click **Don't show this message again**. Click **OK**.



4. The Spybot window is comprised of 2 panes. The smaller pane on the left has tabs that when selected will expand to display additional icons to select. The larger pane on the right displays details based upon your selection. (Note: The screen you see may be different from the following, but the layout will be the same.)

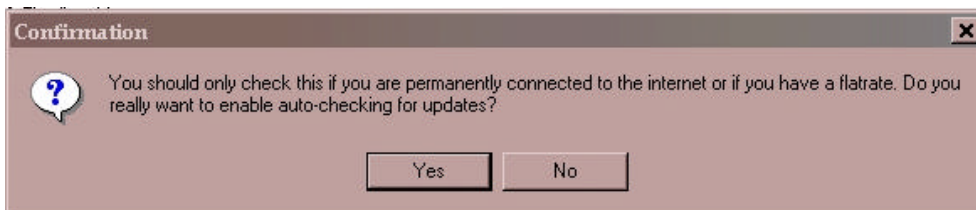


5. Click the **Settings** tab located in the left window pane. It will expand with additional selections. Click the word **Settings**.
6. Scroll down to the options for **Automation**. To automate program updates and to run the program at system startup, make the following choices as shown in the picture below.



Note: Do NOT check "Close program if everything's O.K." – this can cause problems later.

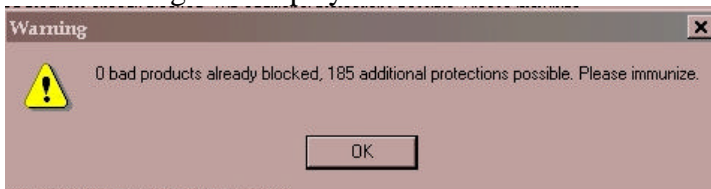
7. If you choose "Search the web for new versions at each program start," the following confirmation screen will appear. Click Yes.



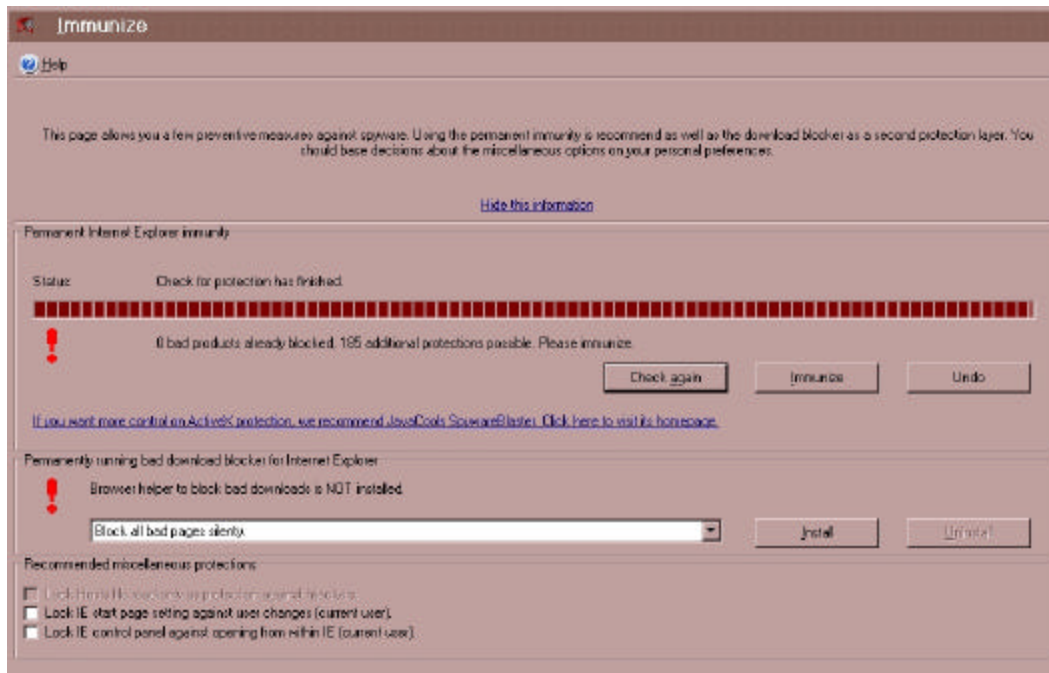
8. On the left window pane, click the **Spybot-S&D** tab and select the **Immunize** icon.



9. The following will display. Click **OK**

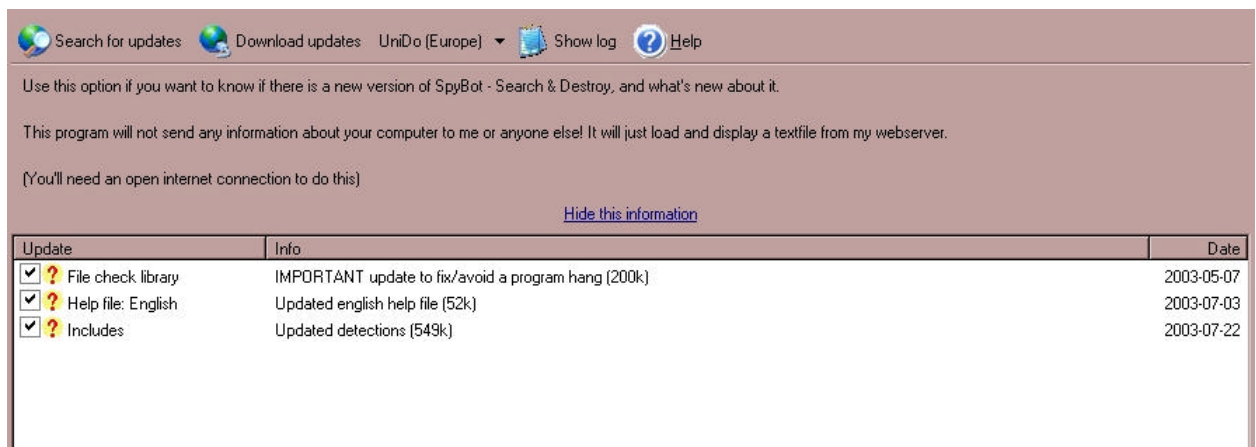


10. Click the **Immunize** button in the right window pane as shown below.

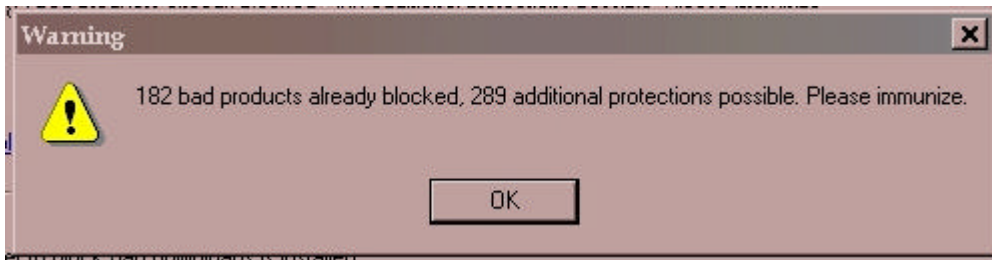


PART III. Search for and apply updates

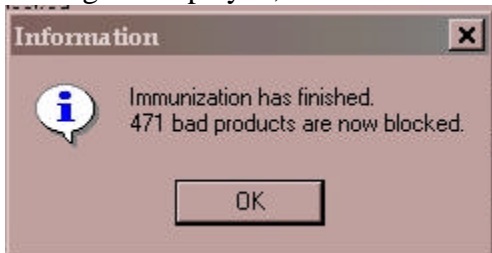
1. From the left pane, click the **Online** tab. The *Update* window displays. From the Right Pane, click **Search for updates**.
2. When the program has finished searching, it will display a screen similar to this. Make sure all updates boxes are checked. Click **Download updates**.



3. The program will download the updates. You may see a black DOS window display briefly during the download. Then the program will close and restart.
4. From the left pane, click the Spybot-S&D tab, and select the **Immunize** icon.
5. The following will display: Click **OK**.



6. Click the **IMMUNIZE** button located on the right window pane. When the following message is displayed, click **OK**.



7. Click **Install** to permanently run the bad download blocker for Internet Explorer.

PART IV. Initial Check for Problems

1. From the Left pane, select the Spybot-S&D tab. Click the **Search & Destroy** icon.
2. The *Search & Destroy* screen will display. Click the **Check for problems** button located on the right window pane. Spybot will check your computer for problems and return a list of problems. Click **Fix selected problems** to remove the listed problems.
3. A window will display: "You are about to remove the checked entries. Do you want to continue?" Click **YES**. Green checkmarks will show that the problems have been fixed.
4. NOTE: If you get the following message, "Some problems couldn't be fixed, the reason could be that associated files are still in use in memory. This could be fixed after a restart. May Spybot-S&D run on your next system startup?" click **YES**
5. **You are finished and can close Spybot!**

PART V. Daily Check for Problems

Automatic check for problems on start: Based upon the settings you completed during this installation process, Spybot will automatically check for problems on a daily basis when you turn on your computer; the Spybot window will open and display on the desktop. While this is going on, you can proceed with checking your mail, your calendar, or whatever. This process will NOT interfere with other tasks you're doing on the computer.

Manual check for problems: If you do NOT turn your computer off daily, you should manually run the Check for Problems daily. Go to **START | Programs | Spybot | Spybot S&D (easy mode)** and click the button, **Check for Problems**.