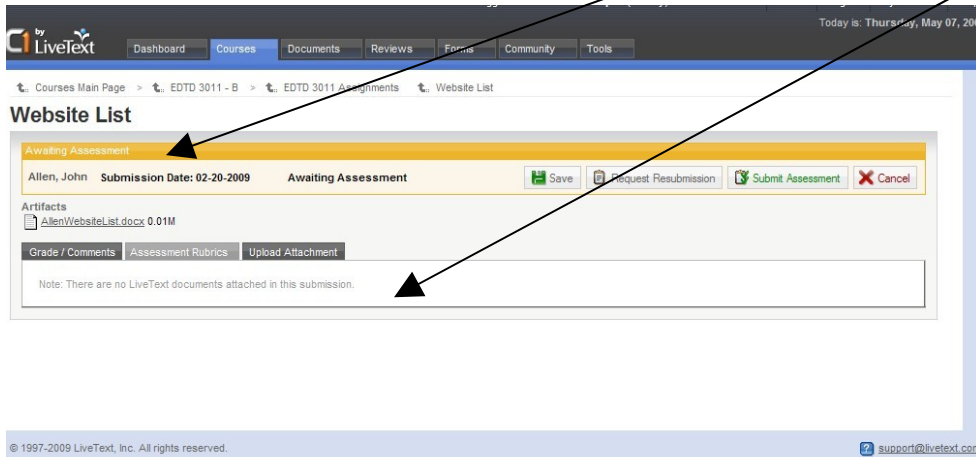
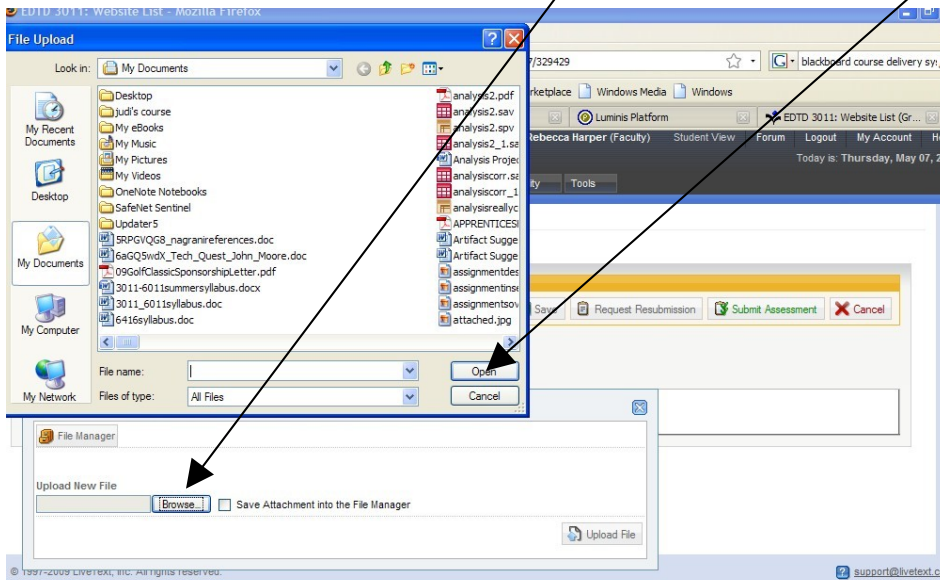


LiveText has added a new feature which will allow you to edit Word documents and then reattach the edited versions. To do so, follow these instructions.

When a student submits an assignment with a Word document attached, it looks like this. Click on the file to open the Word doc. You can make your corrections within the document. Resave the Word document. Once you have resaved the Word document with your corrections, click on Upload Attachment.



Once you click Upload Attachment, click on Browse. Choose your file and click Open.



Click on Upload File. Once your file has been uploaded, click on Insert Selected Attachments.

by LiveText

Dashboard Courses Documents Reviews Forms Community Tools

Courses Main Page > EDTD 3011 - B > EDTD 3011 Assignments Website List

Website List

Awaiting Assessment

Allen, John Submission Date: 02-20-2009 Awaiting Assessment Save Request Resubmission Submit Assessment Cancel

Artifacts

AllenWebsiteList.docx 0.01M

Grade / Comments Assessment Rubrics Upload Attachment

+ Insert Selected Attachment(s)

Selected File(s) 3011_6011syllabus.doc Remove

File Manager

Upload New File Browse... Save Attachment into the File Manager Upload File

| Select | File in Queue | Status |
|-------------------------------------|-----------------------|-----------|
| <input checked="" type="checkbox"/> | 3011_6011syllabus.doc | Completed |

support@livetext.com

Once this is done, it will look like this. Click Submit. When your student gets the assignment, he/she will be able to open the new Word document with your comments.

by LiveText

Dashboard Courses Documents Reviews Forms Community Tools

Courses Main Page > EDTD 3011 - B > EDTD 3011 Assignments Website List

Website List

Awaiting Assessment

Allen, John Submission Date: 02-20-2009 Awaiting Assessment Save Request Resubmission Submit Assessment Cancel

Artifacts

AllenWebsiteList.docx 0.01M

Grade / Comments Assessment Rubrics Upload Attachment

Assessor's Attachment(s) 3011_6011syllabus.doc Remove

File Manager

Upload New File Browse... Save Attachment into the File Manager Upload File

| Select | File in Queue | Status |
|-------------------------------------|-----------------------|-----------|
| <input checked="" type="checkbox"/> | 3011_6011syllabus.doc | Completed |

support@livetext.com