

Figures 1 to 22 accompany the following paper.

Jurgen Brauer, "Total and Marginal Returns to Strategic Bombing: Germany, 1939-1945," presented at Rutgers University, Newark, NJ, May 2001 and at Middlesex University Business School, London, June 2001.

Germany: Land transportation graphs

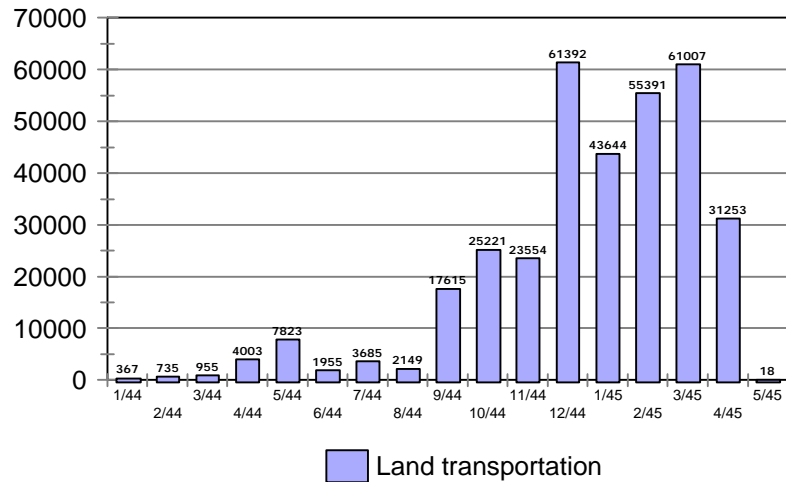


Figure 1: Tonnage dropped on land transportation targets

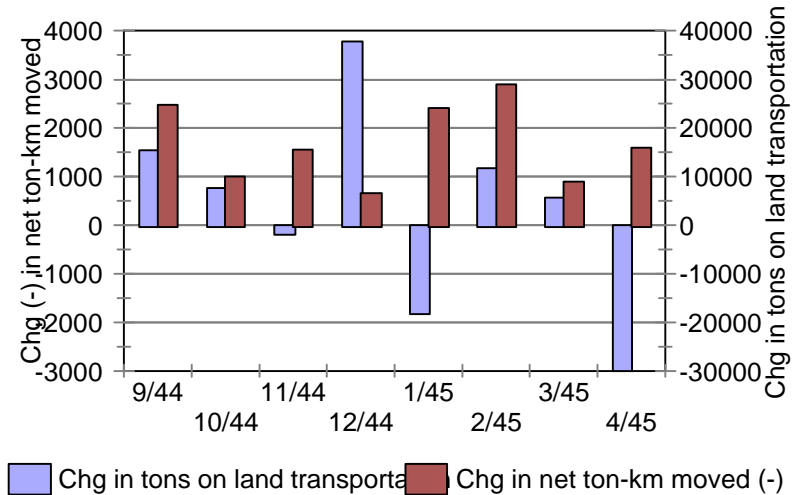


Figure 3: Change in tonnage dropped and change in net ton-km moved

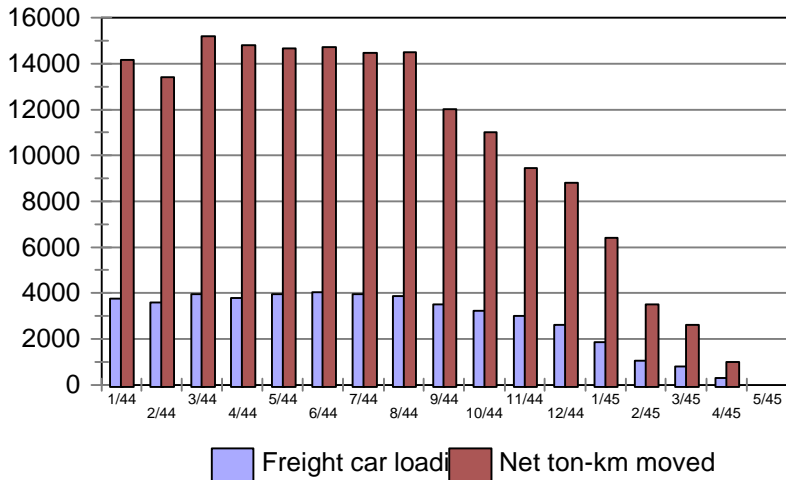


Figure 2: Freight car loadings and net ton-km moved

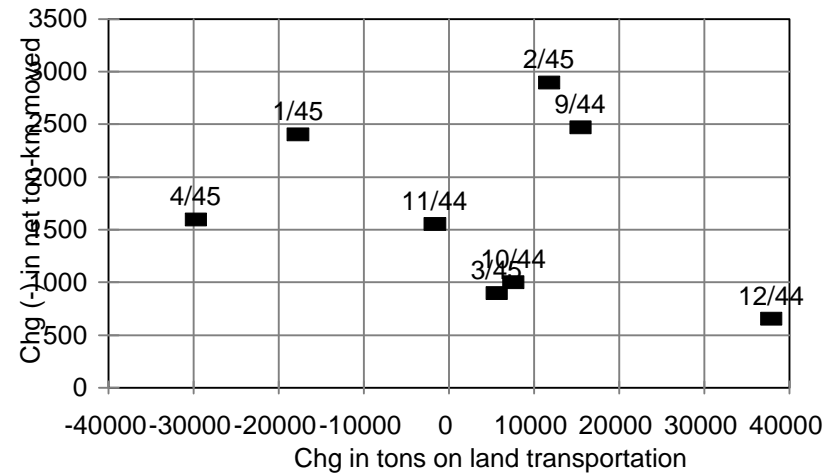


Figure 4: Land transportation targets; marginal returns

Germany: Aircraft factory graphs

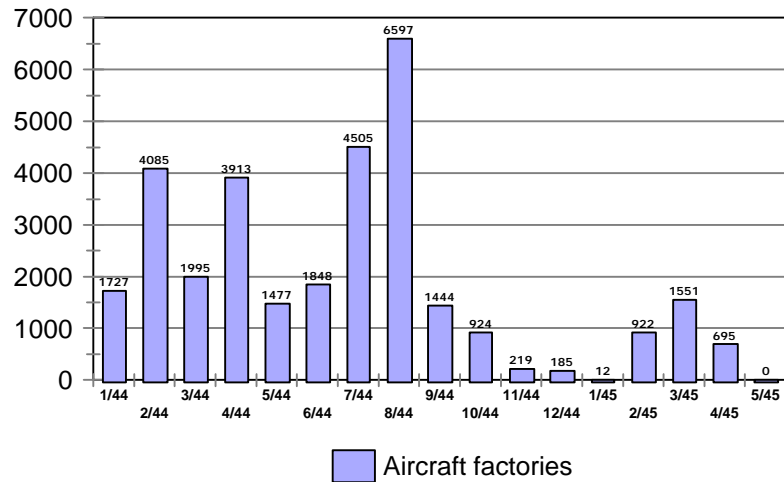


Figure 5

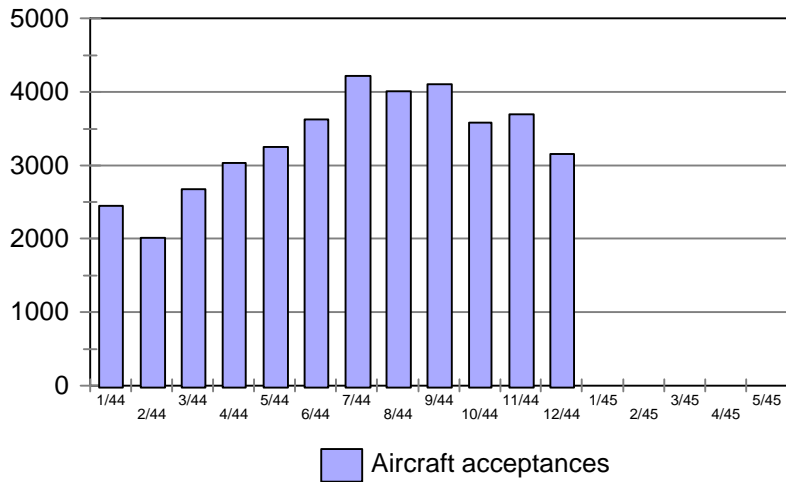


Figure 6

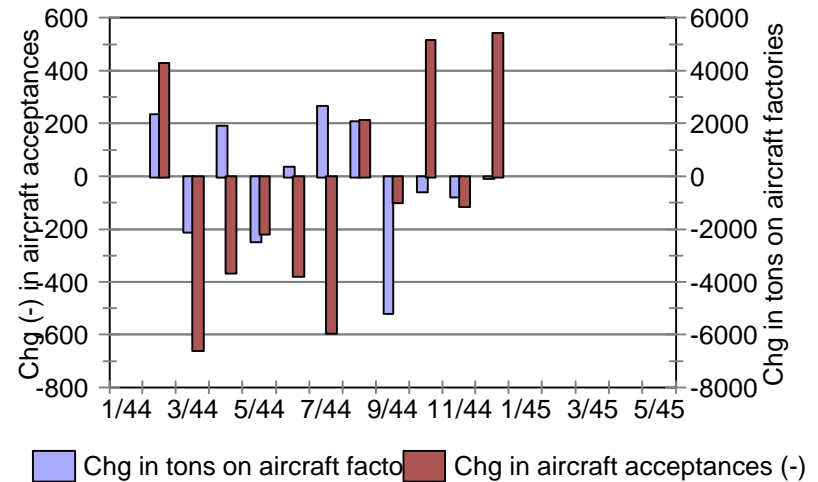


Figure 7

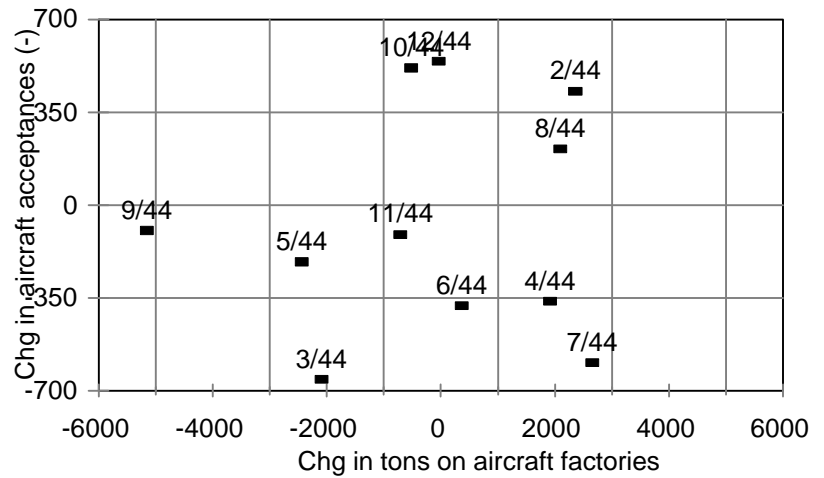


Figure 8

Germany: Oil target graphs

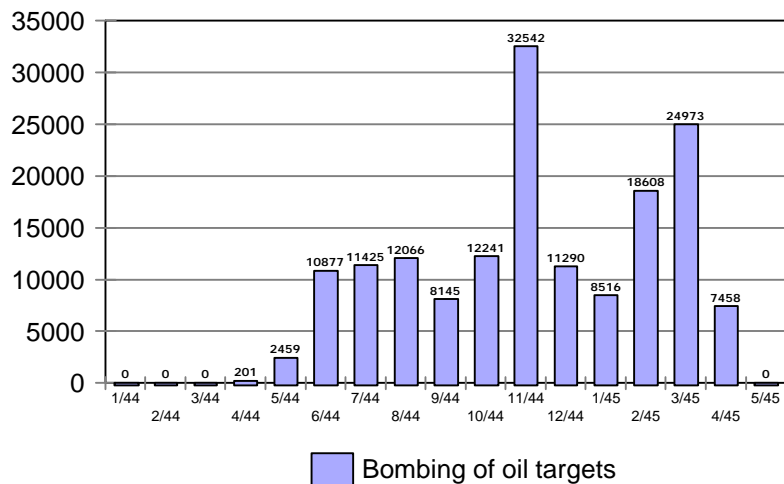


Figure 9

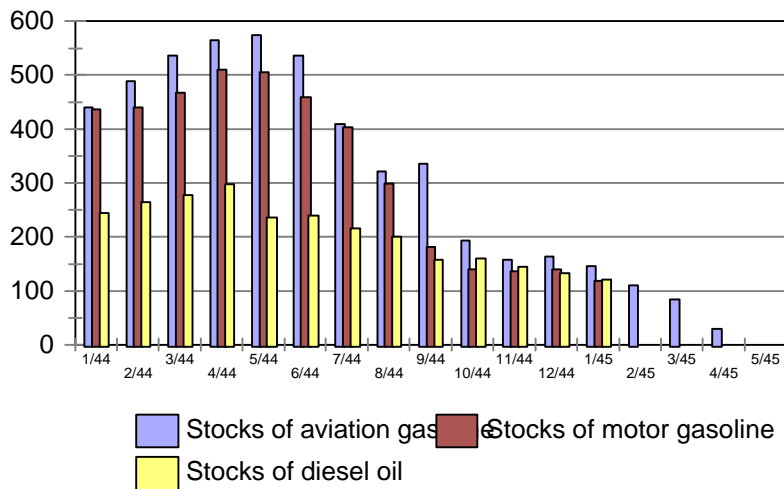


Figure 10

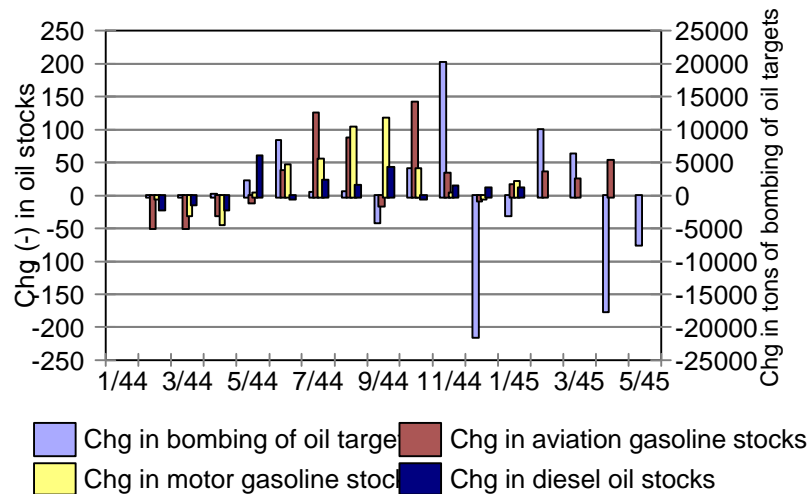


Figure 11

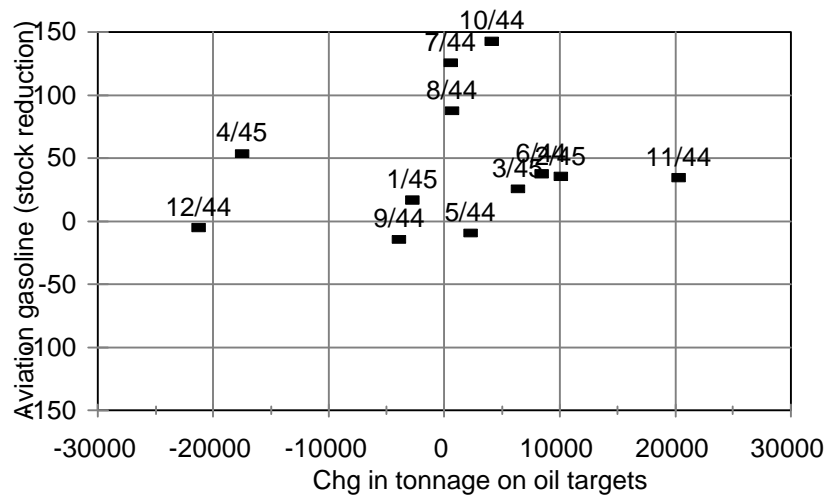


Figure 12

Germany: Chemical production graphs

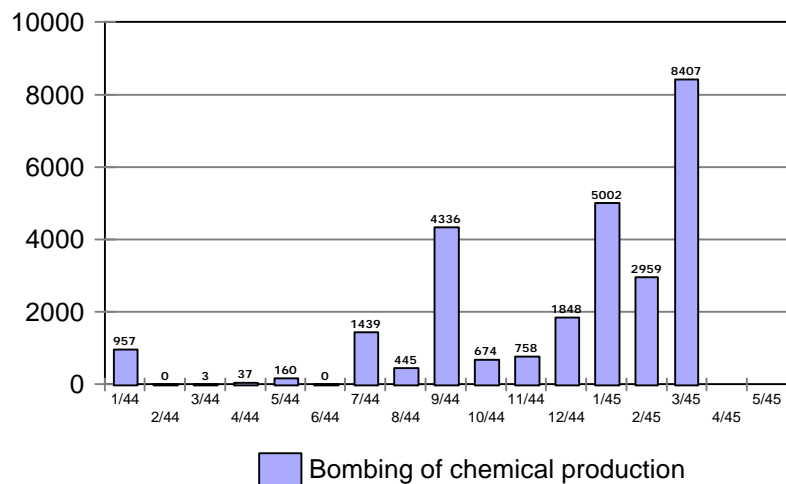


Figure 13

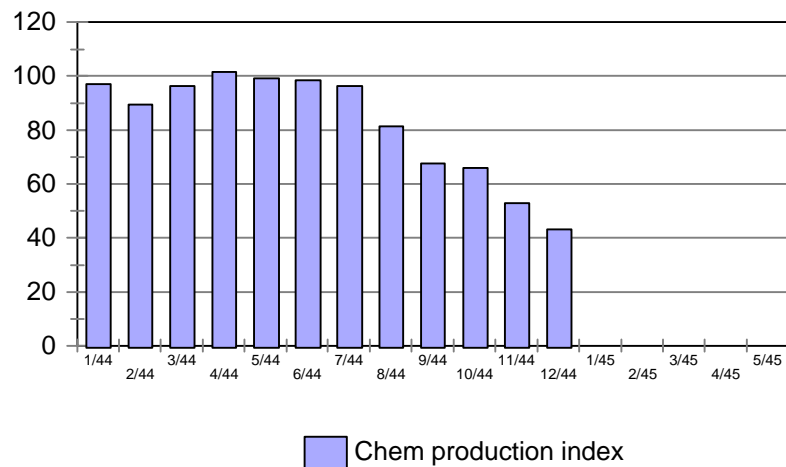


Figure 14

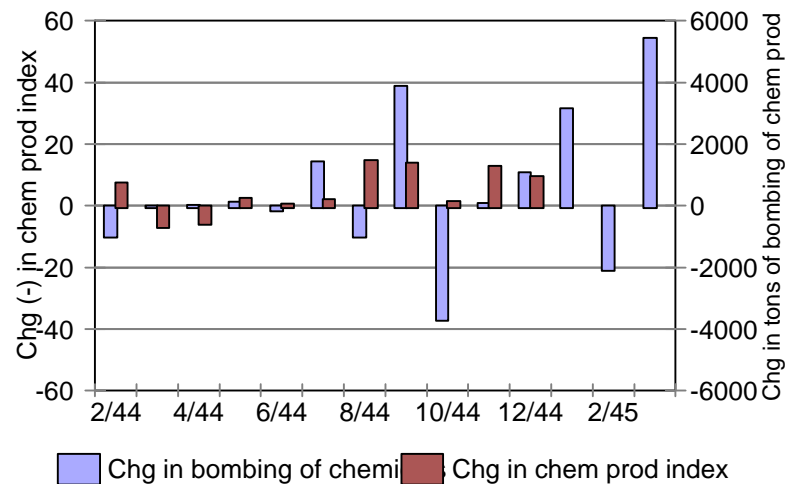


Figure 15

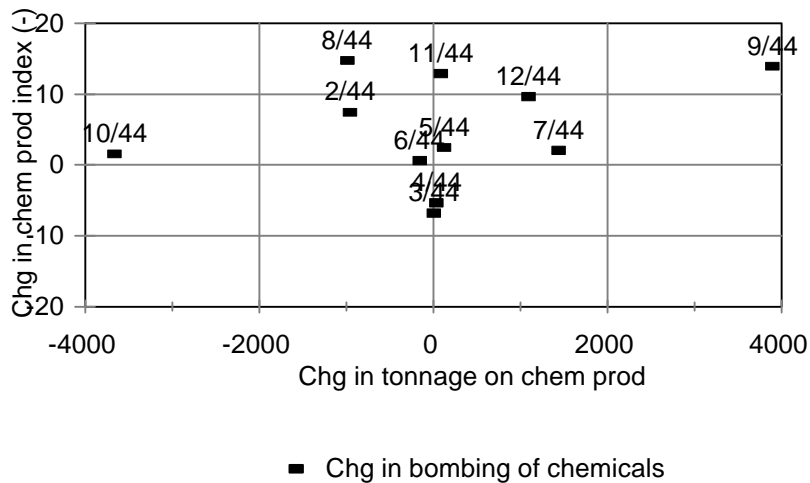


Figure 16

USAAF/RAF Strategic Bombing (Europe)

(12/39-5/45, totals by target in tons)

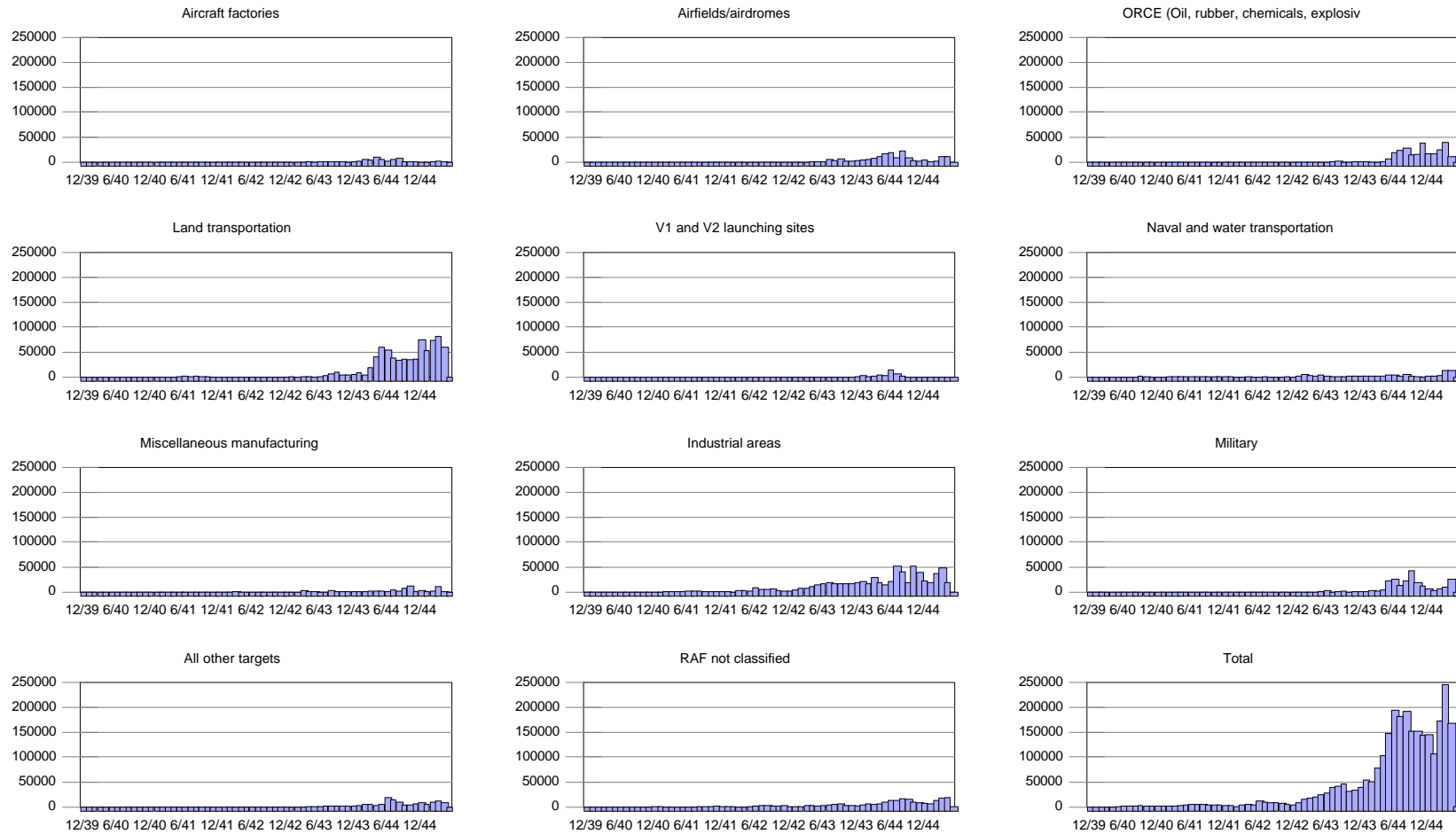


Figure 17

USAAF/RAF Strategic Bombing (Europe) (12/39-5/45, totals by target in tons)

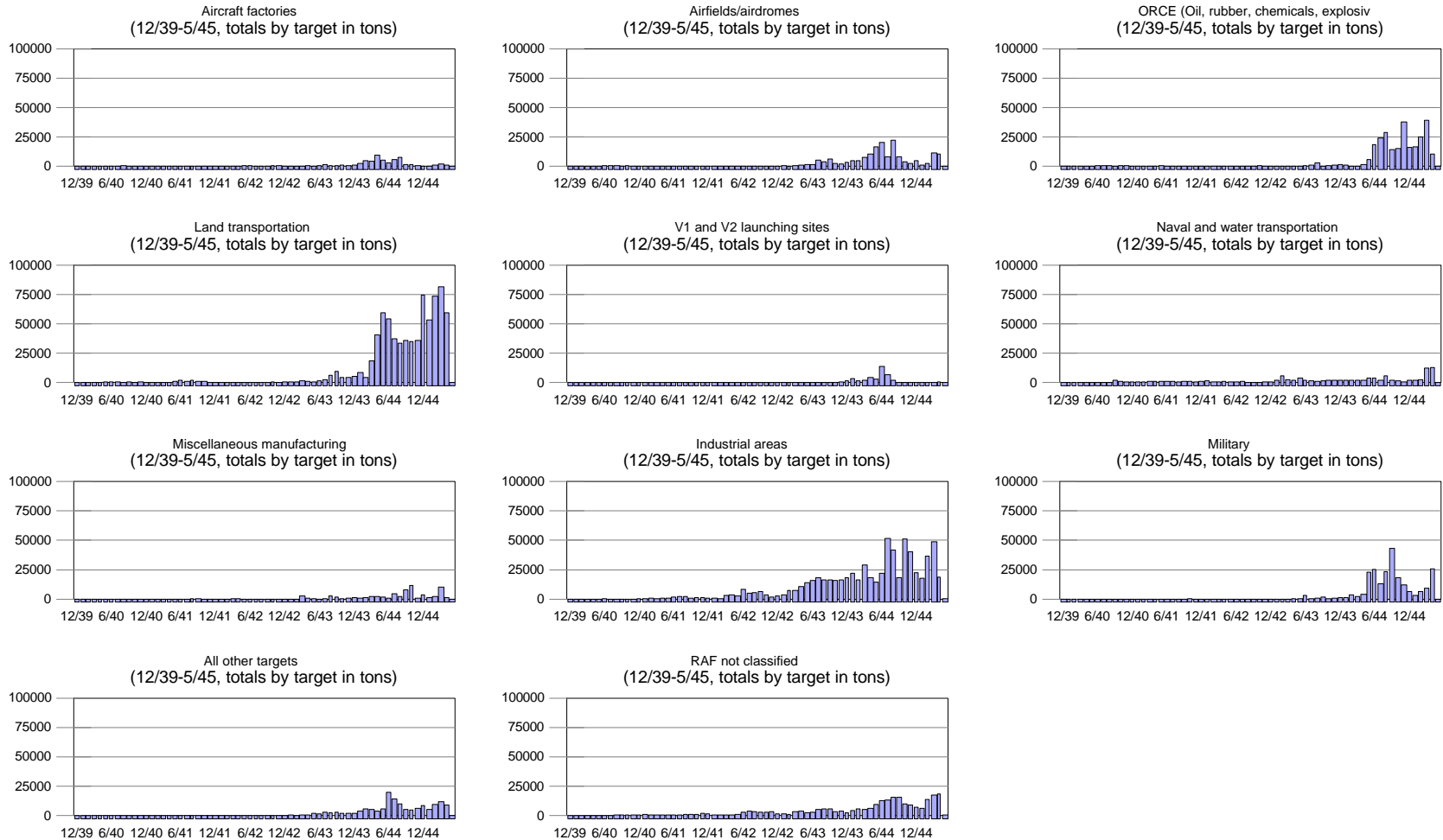


Figure 18

RAF/USAAF non-German Bombing 1/44 to 5/45 (in tons)

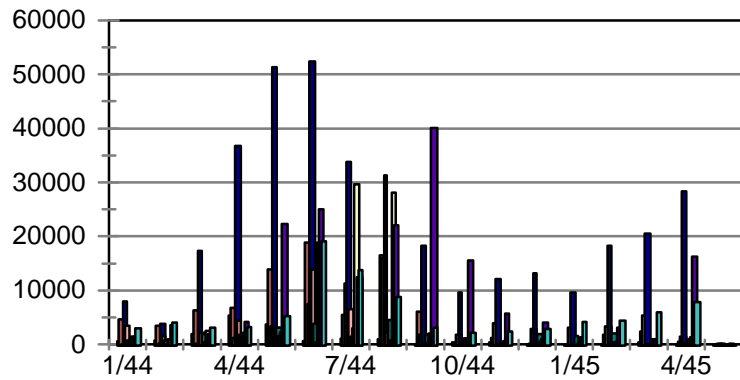


Figure 19

RAF/USAAF non-German Bombin 1/44 to 5/45 (by target, in tons)

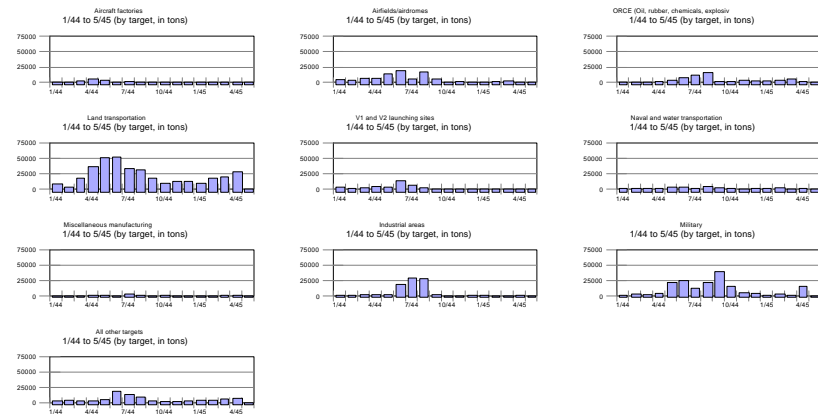


Figure 21

RAF/USAAF German Bombing 1/44 to 5/45 (in tons)

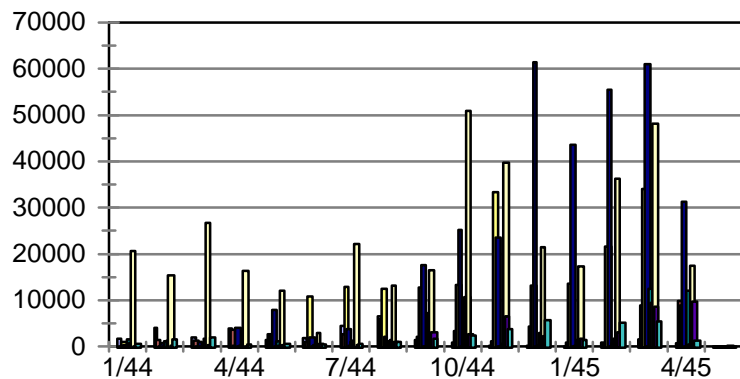


Figure 20

RAF/USAAF German Bombing 1/44 to 5/45 (by target, in tons)

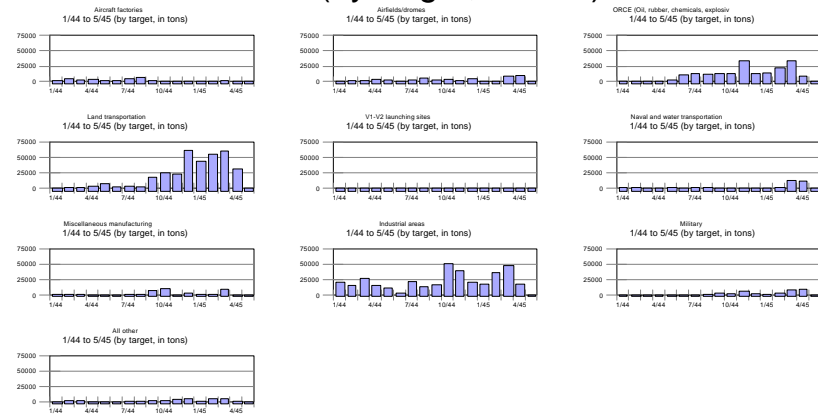


Figure 22